



**AERO
INSTRUMENTS
& AVIONICS, INC.**



D A T A S H E E T

PORTABLE DATA LOADER

ARINC 615

With Mass Storage Device

Model No. 11615-20

The Portable Data Loader (PDL) incorporates an internal mass storage device (MSD) capable of storing and maintaining LRU software datasets for an entire aircraft fleet. The included windows based *eLOADS* software enables any personal computer to function as a Software Control Library for the purpose of hosting LRU loadable software dataset images and electronically distributing the images into the PDL MSD via a computer network. Dataset integrity is verified after file is transferred into the PDL and each time the dataset is selected to data load a target airplane device. The MSD eliminates the distribution of disks to airplanes while significantly reducing the time to perform the data load tasks.



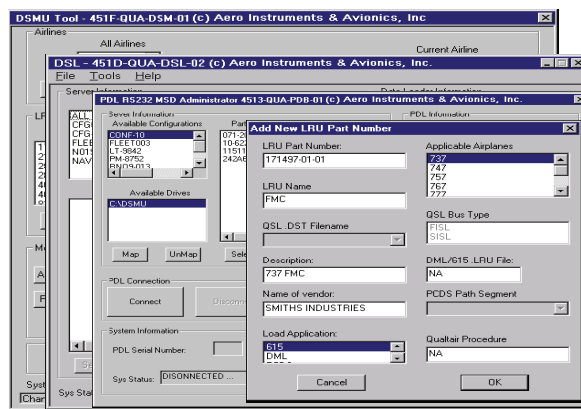
DATA SHEET

FEATURES

- Designed for operation in extended temperatures and harsh environments
- Capable of data loading ARINC 615-3 and 603 compatible devices
- Proven to reduce data loading time by up to fifty percent as compared to competitive data loading products
- *eLOADS* ARINC 666 and 667 compliant Software Configuration Management tool provides controlled process for the automated distribution of airplane loadable software
- Reduces mechanic workload by minimizing load times and eliminating disk changing
- Integrity of loadable software is verified prior to attempting the data load
- Recoups valuable cockpit and cabin space previously used to store software binders
- Data load progress and status messages provide clear feedback to operator
- Accepts any AC power 85 – 280 VAC (45 – 500 Hz) and DC power 14 – 32 VDC
- Power interruption protection
- Start-up BITE performed at each boot up, extensive BITE initiated with diskette
- Upgradeable PC104 based CPU and I/O hardware reduce risk of parts obsolescence
- Expansion capability using COTS PC104 plug in modules

eLOADS is an MS Windows compatible program that provides a simple to use tool for the electronic distribution of airplane software to Portable Data Loaders located at the flight line, hanger, repair shop, etc. instead of mailing media such as floppy diskettes.

eLOADS maintains traceability of the transferred software images to each software source media set. The PDL is capable of reporting which software source media set is installed on its mass storage device and checks the integrity of the software set prior to the initiation of each data load.



SPECIFICATIONS

- Architecture:** PC104 Based
Data Storage: 2Gbyte
I/O: 2 TX/4 RX ARINC 429 High/Low Speed
6 Input Discretes
10/100BaseT Ethernet (Optional)
RS232
- Input Voltage:** 115/230 VAC 50/60/400 Hz, 28VDC
Cooling: Natural Convection
Enclosure: Rugged Aluminum Case With Cable And Disk Storage
Weight: 8 Pounds

ENVIRONMENTAL

- Temperature**
Operating: -40° to +65° C
Storage: -55° to +85° C
- Altitude**
Operating: 0 to 10,000 ft
Storage: 0 to 45,000 ft
- Humidity:** 95% Non-Condensing
Shock/Vibration: 3 Foot Drop On Any Axis