



Beacon Tester Operator's Manual

for models:

BT100A

BT100S

BT100AV *triple*

BT100AVS

including all Ruggedized (-R)
models

Version 3.21

Information contained in this manual is subject to change without notice. Please consult the website at www.wst.ca for new Operator's Manual updates. Complying with all applicable copyright laws is the responsibility of the user. Without limiting the rights under copyright, no part of this document may be reproduced, stored in a retrieval system, or transmitted in any form or by any means including but not limited to, electronic, mechanical, photocopying, recording, or otherwise, or for any purpose, without the written permission of WS Technologies Inc. (WST). WST may have patents, patent applications, trademarks, copyrights, or other intellectual property rights covering subject matter in this document. Except as expressly provided in any written license agreement from WST, the furnishing of this document does not give you any license to these patents, trademarks, copyrights, or other intellectual property.

The purchaser shall not in any event be entitled to, and WST shall not be liable for indirect, special, incidental or consequential damages of any nature including, without limitation, business interruption costs, loss of profit or revenue, loss of data, promotional or manufacturing expenses, overhead, injury to reputation or loss of customers, even if WST has been advised of the possibility of such damages. In any event, purchaser's recovery from WST for any claim shall not exceed purchaser's purchase price for the product giving rise to such claim irrespective of the nature of the claim, whether in contract, tort, warranty, or otherwise. WST shall not be liable for and purchaser shall indemnify, defend and hold WST, its agents, distributors, dealers, successors and assigns harmless from any and all claims, damages or losses, including injury or death, arising from or relating to the use or failure of the products.

**Copyright © 2015 WS Technologies Inc.
All rights reserved.**

**Printed in Canada
June 2015**

CONTENTS

- INTRODUCTION..... 1
- SUMMARY OF MODELS 1
- UNPACKING..... 1
- BEFORE YOU START 2
- GETTING STARTED..... 2
 - Flowcharts:..... 2
 - Setting the desired measurement File Name:..... 6
 - Setting the Input Mode and REF Mode:..... 6
 - Selecting the desired 10 MHz Reference source:..... 7
 - Selecting the desired RF Input Mode:..... 7
 - Setting the Configuration Settings:..... 8
 - Saving Options Setting:..... 9
 - Location Coordinates Setting:..... 9
 - Receive Mode Settings:..... 9
 - Non- 406 MHz Beacons:..... 9
 - Training Frequencies for 121.5 MHz and 243 MHz:..... 10
 - PDA Display Options Settings:..... 11
 - Stability Settings:..... 11
 - Cable Loss:..... 12
- MAKING MEASUREMENTS..... 13
 - General:..... 13
 - Conventional Measurement Mode:..... 15
 - Stability Measurement Mode (BT100S and BT100AVS models only):..... 16
 - Terminating the Stability Test Prior to Completion:..... 18
- MEASUREMENTS RESULTS 19
 - Decode Screens:..... 19
 - Details Screens:..... 20
 - Graphics screens:..... 20
 - Options:..... 21
 - User Comments:..... 21
 - Listen to 121/243 Audio (BT100AV*triple* and BT100AVS models only):..... 22
 - Morse Code Decipher (BT100AV*triple* and BT100AVS models only):..... 22
 - Files:..... 23
 - About Beacon Tester:..... 24
 - 121.5 MHz Homing Transmitter in Self-Test Mode:..... 24
- PRINTING THE MEASUREMENT TEST REPORT 25
 - USB:..... 25
 - Memory Card:..... 26
 - Wireless Link:..... 28
- DELIMITED TEXT FILE..... 29
- RE-INSTALLING OR UPDATING BEACON TESTER SOFTWARE 29
- SOFTWARE UPDATES 30
- BEACON TESTER MODEL UPGRADING 30
- RUGGED PDA CONSIDERATIONS 30
 - Removing CF Card in Rugged version:..... 30
 - Inserting CF Card in Rugged version:..... 31
 - Stability Mode Measurements using Rugged version:..... 31
- USING THE TSE100 SCREEN BOX 32
- LIMIT TESTER SOFTWARE ADD-ON..... 33
- FREQUENTLY ASKED QUESTIONS 34
- SPECIFICATIONS..... 38
- REGULATORY INFORMATION 39
- DECLARATION OF CONFORMITY..... 40
- WARRANTY INFORMATION 41
- CALIBRATION 41
- RETURNS..... 41
- POWER CONVERSION CHART - dBm to Watts 42

WARNING!

DO NOT ACTIVATE ANY BEACON IN ITS NORMAL ACTIVATE MODE UNLESS THE BEACON IS IN A SCREEN BOX (TSE100) OR A SCREEN ROOM. DOING SO COULD RESULT IN A FALSE DISTRESS ALERT.

WARNING!

WHEN USING 5 WATT INPUT MODE DO NOT EXCEED A DUTY CYCLE OF ONE BURST (520 MS) EVERY 30 SECONDS. DAMAGE WILL RESULT!

INTRODUCTION

Thank you for choosing the BT100 series of 406 Beacon Testers. This Operator's Manual explains the operation of all available models: BT100A, BT100S, BT100AVtriple, and BT100AVS, and all Ruggedized (-R) models. Measurement capabilities differ with each model.

SUMMARY OF MODELS

BT100A: This model decodes the 406 MHz message, measures the 406 MHz transmitter and the 121.5 MHz transmitter.

BT100S: This model decodes the 406 MHz message, measures the 406 MHz transmitter, the 406 MHz frequency stability, and the 121.5 MHz transmitter.

BT100AVtriple: This model decodes the 406 MHz message, measures the 406 MHz transmitter, the 121.5 MHz transmitter, and the 243 MHz transmitter (if present).

BT100AVS: This model decodes the 406 MHz message, measures the 406 MHz transmitter, the 406 MHz frequency stability, the 121.5 MHz transmitter, and the 243 MHz transmitter (if present).

-R: When any of the above models include a -R suffix, that model is equipped with a ruggedized PDA.

UNPACKING

Please verify the contents of your package. It should contain:

- Beacon Tester CF Card
- Operator's Manual
- Certificate of Calibration with Calibration data
- 406 Interface cable
- REF Interface cable
- Screen cleaning cloth
- Zipper Pouch (not included with -R models)
- Waterproof yellow hard case
- PDA
- CD containing PDA software
- AC Adapter
- PC interface cable
- PDA User Manual

BEFORE YOU START

Unpack the PDA and charge the batteries in accordance with the PDA manufacturer's instructions.

NOTE: Windows Mobile Device Center is used to interface between your PC USB port and the PDA. It should install automatically when you connect your PDA to your PC for the first time.

GETTING STARTED

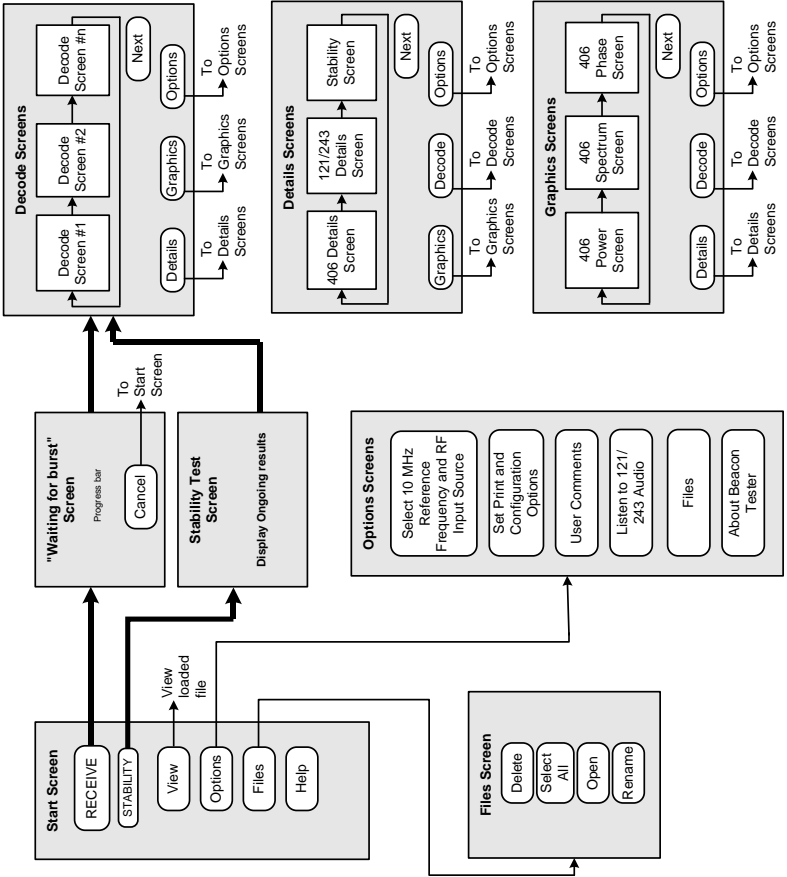
Please read this Operator's Manual to become familiar with the operation of the Beacon Tester.

Flowcharts:

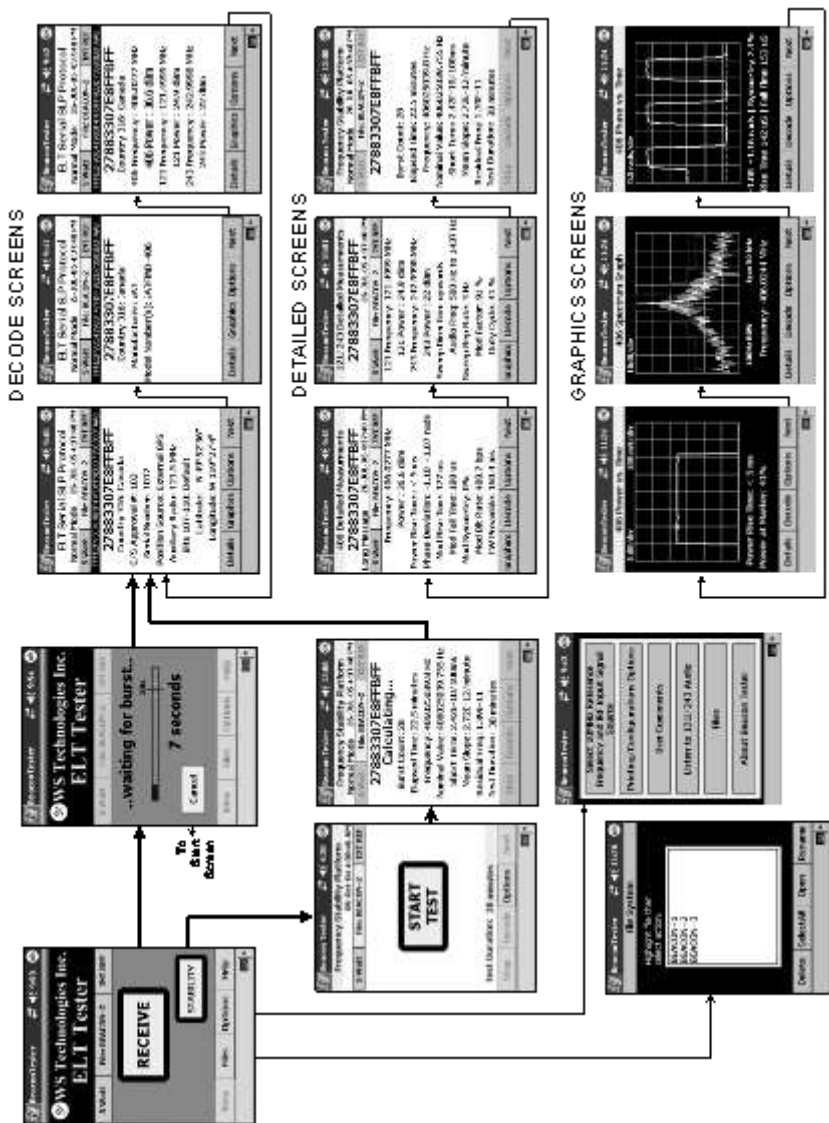
Examining the Navigation Flowcharts located on the following pages will help you understand the basic operation of the Beacon Tester program.

Beacon Tester Flowchart

(Availability of some functions depends on model.)



Beacon Tester Graphic Flowchart

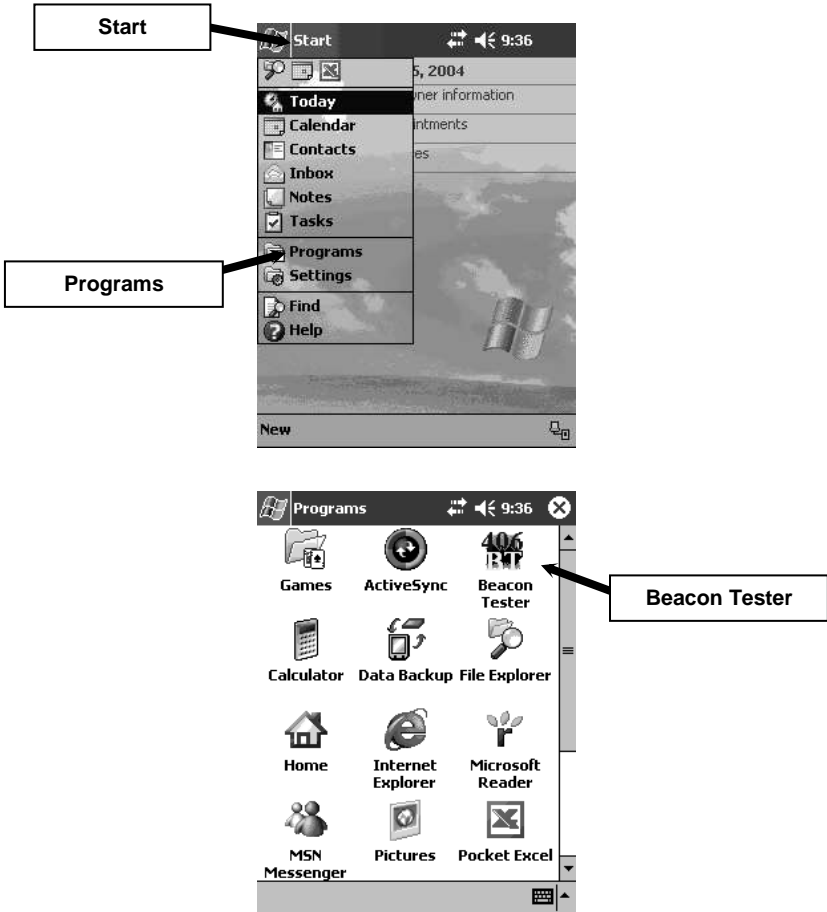


Running the Beacon Tester Application:

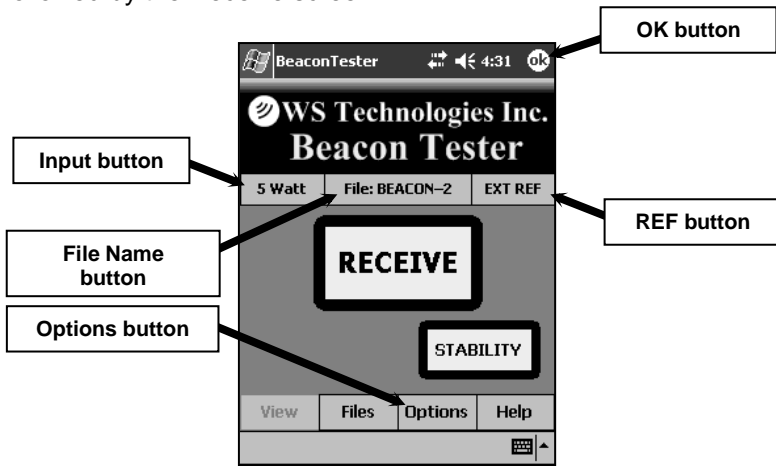
Ensure the Beacon Tester CF card is inserted into the CompactFlash (CF) slot of the PDA.

Launch the Beacon Tester application by tapping:

Start > Programs > Beacon Tester



The 406 Beacon Tester title screen will show for a few seconds followed by the Receive screen:



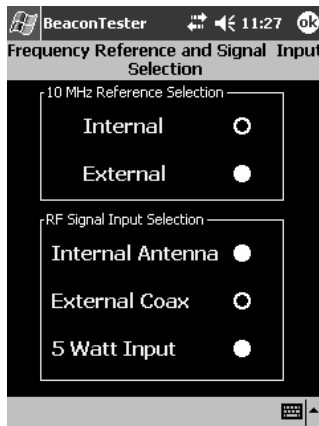
Setting the desired measurement File Name:

- tap the **File Name** button as shown above.
- type the desired measurement file name followed by **OK**.
- type the desired number extension followed by **OK**.

NOTE: Do not use forbidden file name characters: / \ : * ? " < > |

Setting the Input Mode and REF Mode:

- tap either the **Input** button or **REF** button as shown above. The following screen will appear.



Selecting the desired 10 MHz Reference source:

- select **Internal** to use the internal 10 MHz reference frequency.
- select **External** to use an external 10 MHz reference frequency.

NOTE: For Stability mode measurements, the external 10 MHz reference stability must be better than 1×10^{-10} . The internal 10 MHz reference is not suitable for completing Stability measurements. In non-Stability mode measurements, the external 10 MHz reference stability must be better than 1×10^{-9} .

Selecting the desired RF Input Mode:

- select **Internal Antenna** when receiving the beacon signal through the air.
- select **External Coax** when receiving the beacon signal using a 50Ω coax cable via an indirect method such as a directional coupler or a screen box with a sniffer antenna and 50 Ω output.
- select **5 Watt Input** when connecting the output of the beacon directly to the RF Input using the 406 Interface cable. Use this mode when using the WST Screen Box (model TSE100) with the beacon and the tester connected directly and both located in the Screen Box.
- tap **OK** (top right corner) when done.

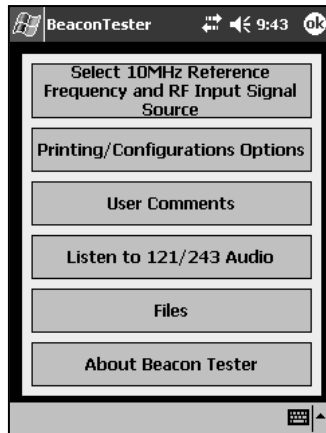
WARNING!

WHEN USING 5 WATT INPUT DO NOT EXCEED A DUTY CYCLE OF ONE BURST (520 MS) EVERY 30 SECONDS FOR A 406 MHz 5 WATT SIGNAL. DAMAGE WILL RESULT!

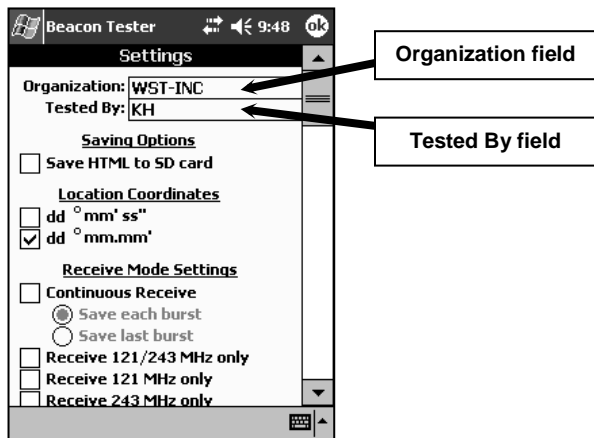
NOTE: Using the 5 Watt Input will result in absolute power measurement units (dBm). Using the Internal Antenna or External Coax will result in relative power measurement units (%).

Setting the Configuration Settings:

- tap the **Options** button.



- tap the **Printing/Configuration Options** button.



- tap the **Organization** field as shown above.
- enter your organization name or initials.
- tap the **Tested By** field as shown above.
- enter your name or initials as desired.

NOTE: The entered *Organization* and *Tested By* names will appear on each printed Test Report.

Saving Options Setting:

- select the **Save HTML to SD card** box if you want each measurement saved to an SD memory card in addition to being saved in the standard PDA memory. Not available in the Ruggedized models.

Location Coordinates Setting:

- select the box relating to your desired location coordinate display.

NOTE: dd° mm.mm' is degrees/decimal minutes, dd° mm' ss" is degrees/minutes/seconds.

Receive Mode Settings:

- to receive each burst manually (i.e.: you have to press Receive for each measurement), do not select any box.
- if you are measuring a beacon in the activate mode where the beacon is transmitting a burst each 50 seconds, then select the **Continuous Receive** box.
- when using Continuous Receive mode, you have the option of saving each burst or saving only the last burst. Select the desired box.

NOTE: When saving each burst, the number on the end of the File Name will automatically increment.

Non- 406 MHz Beacons:

- if you are measuring a beacon without 406 MHz capabilities, then select one of the following:

Receive 121/243 MHz only box.

Receive 121 MHz only box.

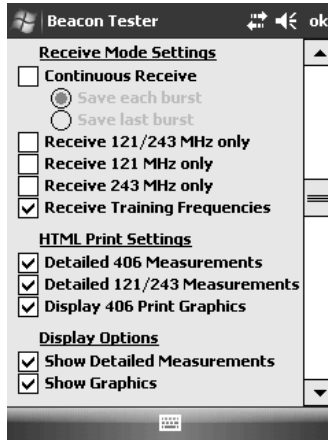
Receive 243 MHz only box.

NOTE: In the 121/243 MHz only mode, the modulation measurements are derived from the 121 MHz transmitter. If you wish to measure the 243 MHz modulation parameters you must select the 243 MHz only box.

Training Frequencies for 121.5 MHz and 243 MHz:

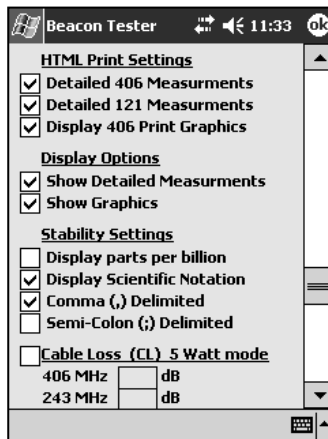
Beacon Testers (serial numbers 6000 and above) have the capability to measure various training frequencies, including 121.6, 121.65, 121.775, 243.2, 243.4 MHz. When this mode is selected, the measurement accuracy is slightly degraded.

To enable this mode, select the box adjacent to **Receive Training Frequencies**.



HTML (Test Report) Print Settings:

- scroll down on the Configuration Settings screen.



NOTE: You can choose the level of detail you wish to print on the Test Report.

- if you do not wish to print the detailed 406 Measurements then un-select the ***Detailed 406 Measurements*** box. The frequency and power will still be printed.
- if you do not wish to print the detailed 121/243 Measurements then un-select the ***Detailed 121/243 Measurements*** box. The frequency and power will still be printed.
- if you do not wish to print the 406 MHz Graphics then un-select the ***Display 406 Print Graphics*** box.

PDA Display Options Settings:

- if you do not wish to see the detailed measurements or graphics on the PDA display then un-select the ***Show Detailed Measurements*** box or ***Show Graphics*** box as appropriate.

NOTE: The Detailed Measurements and/or Graphics can be displayed later by re-selecting the appropriate box.

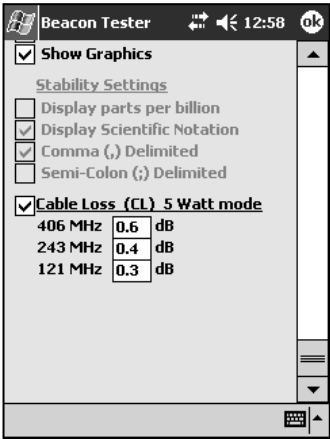
Stability Settings:

- select the desired setting to display either parts per billion (ppb) or scientific notation.
- select the desired delimiter (comma or semicolon) to use in the delimited text file that is generated during Stability tests.

Cable Loss:

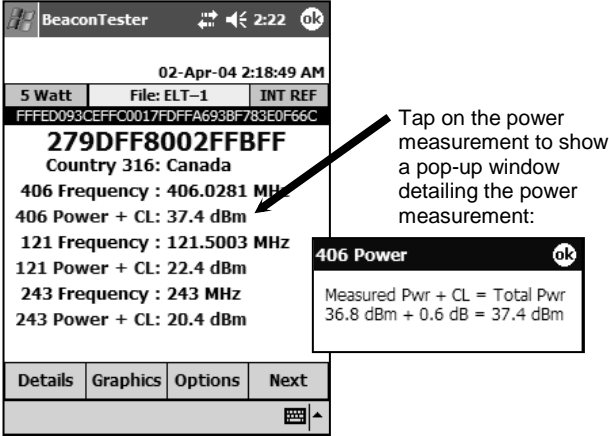
You may wish to enter the Cable Loss factor of any additional 50Ω cable used between the Beacon Tester 406 Interface cable and the beacon. You must determine the Cable Loss factors for your cable at 406 MHz, 121.5 MHz and 243 MHz.

- scroll down on the Configuration Settings screen.



- select the **Cable Loss** box and enter the cable loss value for each frequency.

Once the measurement has been taken, the Cable Loss factor (CL) will be indicated on all power measurements.



MAKING MEASUREMENTS

NOTE: Interpreting the results provided by the Beacon Tester requires some knowledge of beacon requirements. Using the self test mode of the beacon may result in some measurements being outside the required limits due to the lack of a warm-up period.

WARNING! DO NOT ACTIVATE ANY BEACON IN ITS NORMAL ACTIVATE MODE UNLESS THE BEACON IS IN A SCREEN BOX (TSE100) OR A SCREEN ROOM. DOING SO COULD RESULT IN A FALSE DISTRESS ALERT.

General:

All measurements will produce a Test Report. In addition, the stability models (BT100S and BT100AVS) will create a delimited text file.

Measurement results are stored in the PDA memory. Each measurement will be saved in a folder with the same name as the measurement. For example, a measurement with the name “Burst-1” is made on a beacon. When the measurement is completed, the following is created:

<Burst-1>	folder name
Burst-1.htm	test report
graphics_enabler	utility file

The next measurement will be named “Burst-2” unless manually changed.

When the **Receive Mode Settings** are set to **Continuous Receive** and **Save each burst**, then each burst measurement will be saved in the same folder:

<Burst-1>	folder name
Burst-1.htm	1 st burst test report
Burst-2.htm	2 nd burst test report
Burst-3.htm	3 rd burst test report
Burst-4.htm	4 th burst test report
etc.	
graphics_enabler	utility file

For the stability models (BT100S and BT100AVS) in the **Stability mode**, the measurement will be saved in a folder with the same name as the measurement. For example, a stability measurement with the name "Burst-5" is made on a beacon. When the measurement is completed, the following is created:

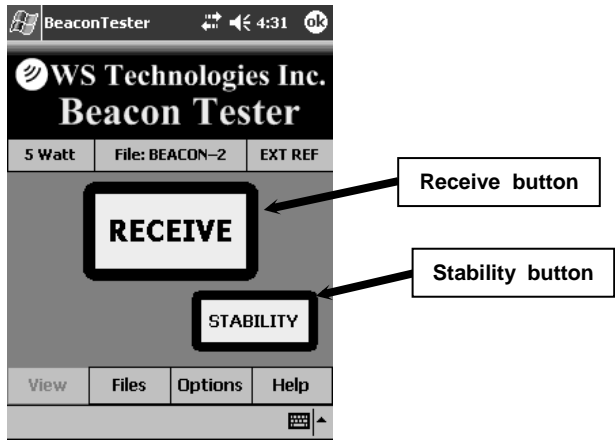
<Burst-5>

Burst-5.htm
graphics_enabler
Burst-5(S).txt

folder name
test report
utility file
delimited text file

Conventional Measurement Mode:

- activate the beacon under test.
- tap the **Receive** button.



The following screen will appear and the timer will start.

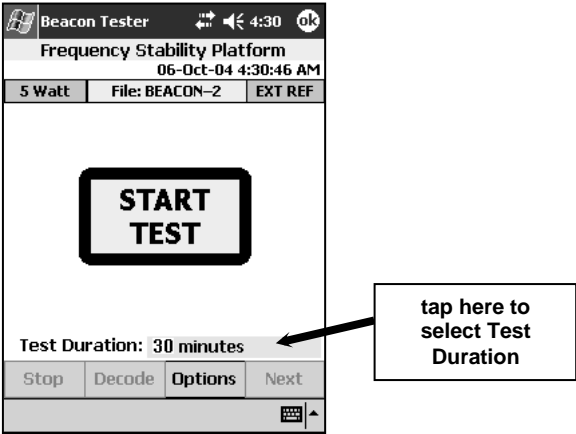


- if the beacon is transmitting a 121.5/243 MHz homing signal the tester will produce the characteristic swept audio tone and display *121/243 Received*.
- once a 406 MHz burst is received, the first Decode screen automatically appears. See the MEASUREMENT RESULTS section.

Stability Measurement Mode (BT100S and BT100AVS models only):

- from the Receive screen tap the **Stability** button.

The following screen will appear.

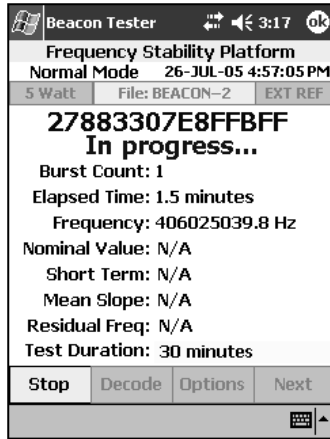


- Select the desired duration of the test by tapping on the area to the right of **Test Duration**. This value can be between 1 minute and 43,200 minutes (30 days).

NOTE: Cospas-Sarsat requirements allow a 15 minute warm-up period before starting the stability test. You can turn the beacon ON and allow it to warm-up for 15 minutes before starting the test, in which case the first stability data point (after 18 bursts) must be within specification. Alternatively, you can turn the beacon on and start the test simultaneously, in which case the beacon does not have to be in specification until 15 minutes after the first stability data point.

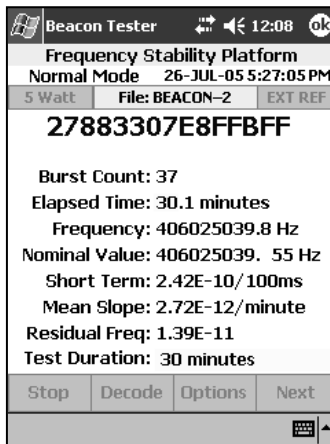
- start the test by tapping the **Start Test** button.

- After the first burst, the following screen will appear:



In the measurement folder on the PDA, a delimited text file is created. This text file is updated after each burst during the stability measurement test. This delimited text file can be imported to your favourite spreadsheet or database application.

- On the 18th burst the stability values are calculated and displayed in the appropriate fields. After each burst, the screen is updated with new values, along with the delimited text file.



- Once Test Duration has been reached, one final burst is automatically captured to create the Test Report.

NOTE: The background of the 15 HEX ID field will turn green when a GPS location is reported in the 406 message.

Terminating the Stability Test Prior to Completion:

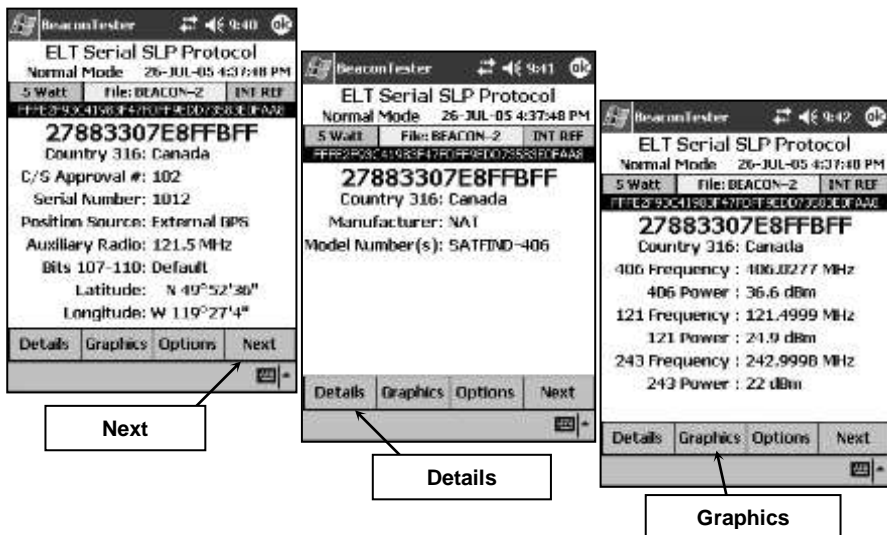
If you wish to stop the stability test prior to the ***Test Duration***, then tap ***Stop***. The ***Stop*** button will turn into a ***Cancel*** button. The display will show “***waiting for final burst ...***”. In order to create a Test Report this final burst must be captured. Once the final burst is captured the test is complete and both the Test Report and delimited text file will reside in the measurement folder. If the final burst is not available (i.e.: the beacon battery has failed) then press the ***Cancel*** button. No Test Report will be created, however, the delimited text file is still available containing all of the measured stability information.

MEASUREMENTS RESULTS

NOTE: Only the stability models (BT100S and BT100AVS) will show the measurement results for the Frequency Stability Platform.

Decode Screens:

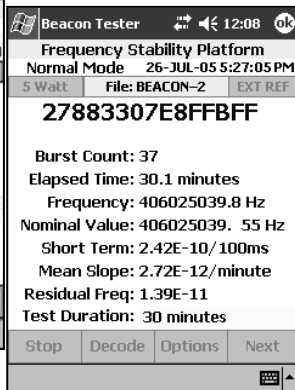
- tap the **Next** button to cycle through the Decode screens.



Details Screens:

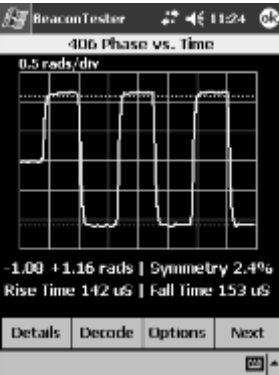
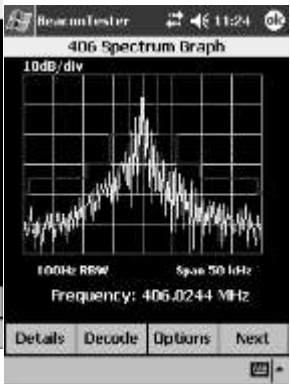
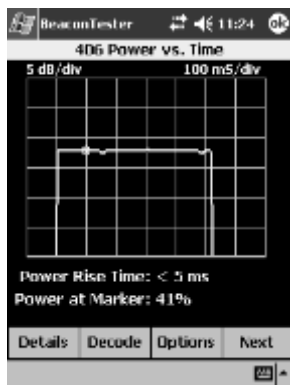
- tap the **Details** button to access the Details section.
- tap the **Next** button to cycle through the Details screens.

NOTE: the Frequency Stability Platform screen will only appear when the Stability Measurement mode is used in the stability models (BT100S and BT100AVS).



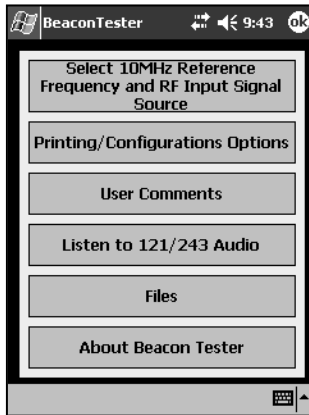
Graphics screens:

- tap the **Graphics** button to access the Graphics section.
- tap the **Next** button to cycle through the Graphics screens.



Options:

- pressing the **Options** button from any of the measurement modes will bring you to this screen:



User Comments:

Once a measurement has been made, you can add user comments. These comments will be saved to the measurement file.

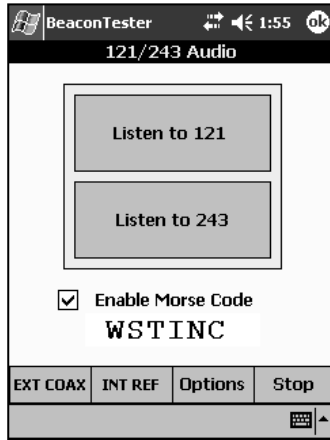
Adding Text Comments:

- from the Options screen, tap **User Comments > Text Comment**.
- type the desired text comment and tap **OK**. The text comment will appear on the printed Test Report.

Adding Audio Comments: (not available on Socket Mobile PDAs)

- from the Options screen, tap **User Comments > Audio Comment**.
- tap **Record** and speak clearly into the PDA microphone. When finished, tap **Stop** and tap **OK**. The audio comment will be saved with the measurement file and can be replayed when opening the measurement file at a later time.

Listen to 121/243 Audio (BT100AV *triple* and BT100AVS models only):



To listen to the real-time demodulated audio tap either the ***Listen to 121*** button or the ***Listen to 243*** button.

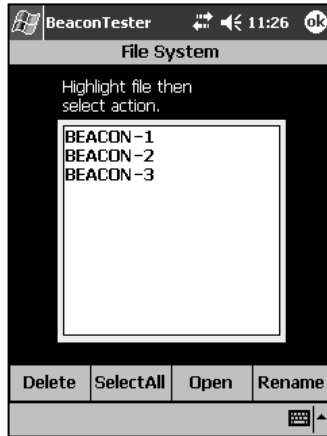
Tap ***Stop*** to stop the real-time audio decoding.

Morse Code Decipher (BT100AV *triple* and BT100AVS models only):

If Morse Code is present on the 121 or 243 MHz signal then check the ***Enable Morse Code*** box. The deciphered Morse Code will be displayed.

Files:

- tap **Files** from the Options screen.

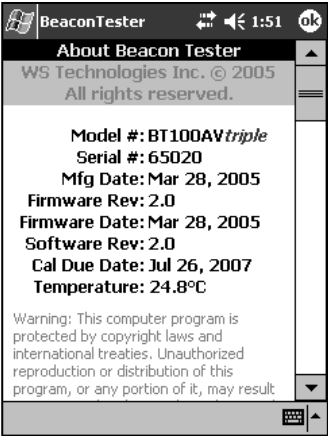


Tapping a file name will select the file name. Tapping the file name again will de-select it. Pressing **Select All** will select all of the files. The **Open** and **Rename** buttons will only work when a single file name has been selected. To delete multiple files, tap **Select All** or select each file individually, then press **Delete**.

NOTE: The PDA can store many measurements. It is strongly advised to transfer your measurements to a storage card or a PC. The PDA is a Windows™ device and subject to periodic situations where data may be lost.

About Beacon Tester:

- tap **About Beacon Tester** from the Options screen.



This screen displays information about the Beacon Tester card installed in the PDA, along with the Firmware and Software dates and versions. The Calibration Due date is shown. A real-time temperature sensor displays the temperature inside the Beacon Tester.

121.5 MHz Homing Transmitter in Self-Test Mode:

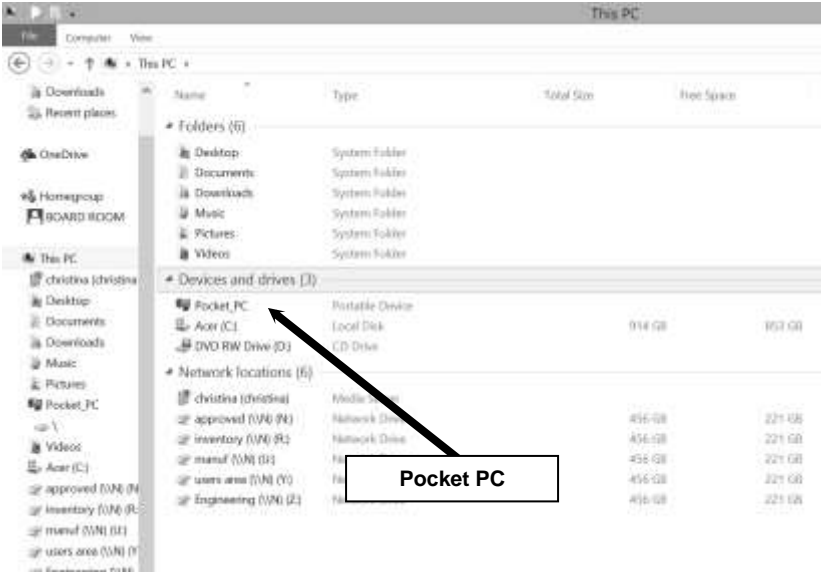
When measuring a beacon using the self-test mode, results for the 121.5 MHz transmitters may vary between different beacon manufacturers. In the self-test mode, some beacons transmit about 1 second of modulated carrier, some beacons transmit a short duration of unmodulated carrier, while some beacons do not transmit 121.5 MHz at all. If the length of modulated carrier is too short for the Beacon Tester to measure, or if a short duration of unmodulated carrier is transmitted, then the Beacon Tester will display the message “unable to measure details” or “unmodulated carrier”.

PRINTING THE MEASUREMENT TEST REPORT

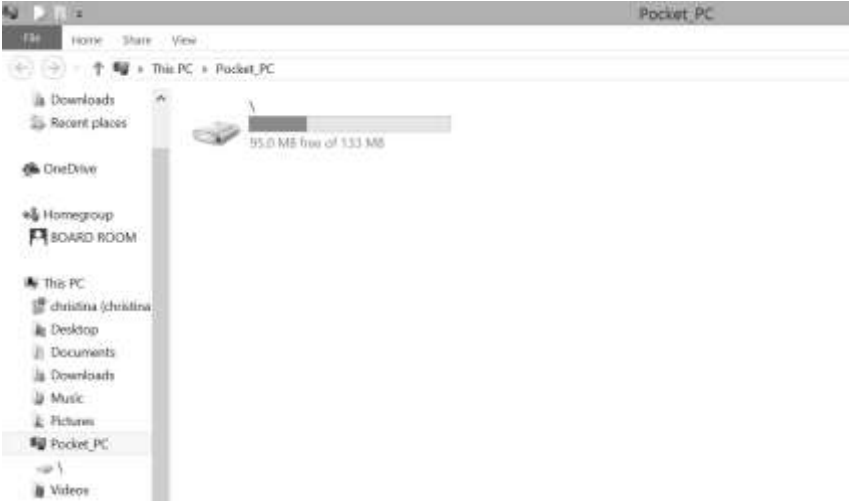
Each measurement generates a folder containing an HTML file containing the measurement data. To generate a printed Test Report, the measurement folder must be transferred to a directory on the PC that is connected to a printer. The transfer of the folder can be accomplished via USB cable, Secure Digital memory card, or wireless link.

USB:

- connect the PDA to the PC using the USB cable in accordance to the PDA manufacturer's instructions.
- depending on your Windows™ version, go to **My Computer** or **File Explorer** on the PC and double-click on: **Pocket PC**



The resulting window will display the PDA file system.



- go to the Measurements directory by clicking on the PDA drive then:
Beacon Tester > Measurements

Each stored measurement will have a folder with the measurement name. Using standard Windows techniques, Cut and Paste, or Drag and Drop the desired measurement folder to the Desktop or any desired location on the PC.

From the PC directory where you transferred this measurement folder, open the folder. Double-clicking on the measurement html file will open it in your browser. Once open, select ***File > Print*** and the measurement Test Report will be printed.

Memory Card:

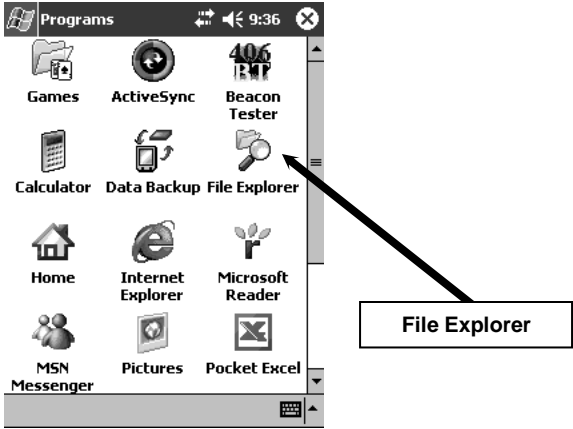
In order to transfer files using a memory card, you will need a Secure Digital (SD) memory card reader on your PC. This can be internal or external.

NOTE: The memory card slot is not accessible on the Ruggedized models.

- turn the PDA on and tap **Start > Programs**.



- tap **File Explorer**.



- go to the Measurements directory by tapping **Beacon Tester > Measurements**. Each measurement will have a folder.
- tap and hold on the measurement folder that you want to transfer.
- select *Copy*
- navigate back to the **My Device** directory by tapping the PDA icon (located below the Windows logo in the top left corner) and tapping **My Device**.

- tap on the desired memory card, **SD Card**.
- tap **Edit** (located in the lower left corner) and tap **Paste**. The measurement folder should now be on the memory card.
- remove the memory card from the PDA slot and insert it into the card reader attached to the PC.
- the card reader will appear as another drive on your PC. Open this drive. Using standard Windows techniques, Cut and Paste, or Drag and Drop the desired measurement folder to the Desktop or any desired location on the PC.
- from the PC directory where you transferred this measurement folder, open the folder. Double-clicking on the measurement html file will open it in your browser. Once open, select **File > Print** and the measurement Test Report will be printed.

Wireless Link:

- if your PDA is equipped with wireless capabilities set up according to the manufacturer's instructions.
- go to File Explorer on the PDA by tapping **Start > Programs > File Explorer**.
- go to the Measurements directory by tapping **Beacon Tester > Measurements**. Each completed measurement will have a folder.
- tap and hold on the measurement folder that you want to transfer.
- select **Copy**
- navigate to the desired folder on the PC and tap and hold until the selection menu appears. Select **Paste**.
- from the PC directory where you transferred this measurement folder, open the folder. Double-clicking on the measurement html file will open it in your browser. Once open, select **File > Print** and the measurement Test Report will be printed.

NOTE: A copy of the `graphics_enabler` utility file must be present in the folder in order for the measurement graphics to be printed on the Test Report.

DELIMITED TEXT FILE

In the stability models (BT100S and BT100AVS), the Stability mode produces a (comma or semicolon) delimited text file containing details on the stability measurement. To access this file, connect the PDA to the PC. From the PC navigate to **Beacon Tester > Measurement > "measurement folder name"**. In this delimited file, each burst creates a record containing the following fields: Date/Time, Burst #, UIN, Full HEX, 406 Power, S1, S2, S3, Elapsed Time, Nominal Frequency, Short Term Stability, Medium Term Stability Mean Slope, and Medium Term Stability Residual Frequency. Each field is terminated with a carriage return linefeed (CRLF). This file can be used in whatever application the user requires to analyze or graph the results.

RE-INSTALLING OR UPDATING BEACON TESTER SOFTWARE

Some levels of reset on various PDA models will cause the Beacon Tester program to be deleted from the program memory. It can easily be re-installed.

On the PDA navigate to Built-In Storage directory.

- tap **Start > Programs > File Explorer**.
- navigate to My Device and tap **Built-In Storage**.
- open the **BTInstaller** folder and tap on the **BTInstaller** program.

NOTE: If the BTInstaller folder or file are missing then go to www.wst.ca and download and install the latest Beacon Tester Software version. Follow the instructions on the website.

Follow the instructions on the screen. **DO NOT interrupt the installation.** Be patient as the installation may take one or two minutes to complete. A green bar at the bottom of the screen will indicate when installation is complete.

If the CF Card is not removed during installation then a soft PDA reset must be initiated to complete the installation process. For the non-rugged PDAs, press the PDA Reset button. For the Rugged PDA, press and hold the Power button for 5 seconds to initiate the reset process.

**Rugged PDA only:
Hold Power button for
5 seconds to initiate
reset**



SOFTWARE UPDATES

Software updates are available free of charge on the WS Technologies Inc. website: www.wst.ca

You are encouraged to keep your Beacon Tester software up to date by downloading and installing the most current software revision. Follow the installation instructions on the website.

BEACON TESTER MODEL UPGRADING

All models can be remotely upgraded as desired. Please contact your purchasing distributor or WS Technologies Inc. for upgrade costs and procedures.

RUGGED PDA CONSIDERATIONS

Removing CF Card in Rugged version:

If you need to replace the CF Card follow these steps:

- Using the screwdriver end of the stylus, rotate the 2 locking screws on the top cap to the unlock position.

**Locking screws in
unlock position**



- Gently, pull top cap away from PDA body, then grasp CF Card and pull out of CF slot. Disconnect RF cable from CF card by gently pulling blue cable directly out of CF card connector.



Inserting CF Card in Rugged version:

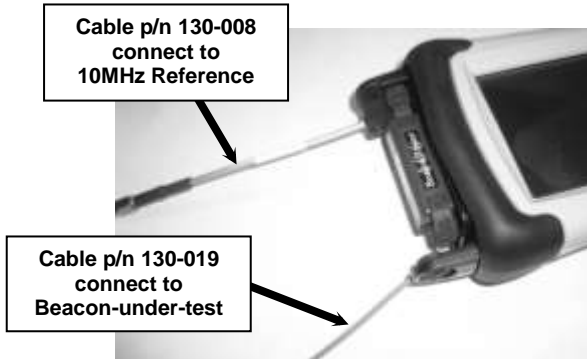
- Connect blue RF cable to CF card connector. Place CF card into CF slot in PDA. Ensure it is properly seated (PDA will turn on).
- Ensure top cap locking screws are rotated to the unlock position. Tuck blue cable into top end of cap, then install top cap onto PDA body ensuring the cable is not pinched.
- Using the screwdriver end of the stylus, rotate locking screws to the lock position.

Stability Mode Measurements using Rugged version:

The top cap must be removed when doing stability measurements in order to connect the required stable 10MHz reference signal.

- Using the screwdriver end of the stylus, rotate the 2 locking screws on the top cap to the unlock position.
- Gently, pull top cap away from PDA body, then grasp CF Card and pull out of CF slot. Disconnect RF cable from CF card by gently pulling the blue cable directly out of CF card connector.
- Connect the REF Cable (p/n 130-008) to the REF Input on the CF Card.
- Connect the RF cable (p/n 130-019) to the 406 Input on the CF Card. (If you are using a direct connection between the Beacon-under-test and the Tester.)

- Insert the CF Card into the CF slot in the PDA.



USING THE TSE100 SCREEN BOX

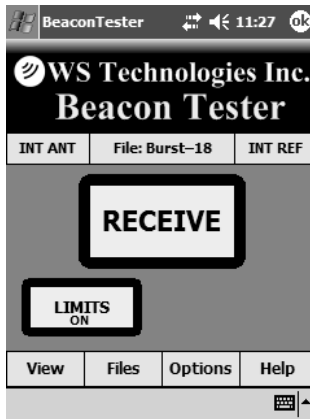
The TSE100 Screen Box will allow testing of the beacon in normal activate mode without the risk of being detected by a satellite (causing a false alert). If the beacon being tested has an internal GPS receiver, the TSE100 will allow you to verify the GPS reception and ensure proper encoding of location data onto the 406 MHz transmission.

Both the beacon and the Beacon Tester are placed into the TSE100 Screen Box. The viewing window and the screened gloves allow you to control both the beacon and the Beacon Tester.



LIMIT TESTER SOFTWARE ADD-ON

The LTS100 LimitTester software add-on is integrated within the BT100 software that will allow the user to determine if a beacon has passed or failed – on the fly. When a beacon fails, the user is notified immediately which parameters have failed and by how much. A separate Test Report is generated showing all of the passed and failed measurement values. The user can select the individual parameters that are tested or not tested.



Parameters Failed			
Parameters	Measured Data	Limits	
		Lower	Upper
406 +Mod (rad)	0.93	0.96	1.24
406 -Mod (rad)	-1.28	-0.96	-1.24

All Parameters Passed			
Parameters	Measured Data	Limits	
		Lower	Upper

Visit www.wst.ca for more details.

FREQUENTLY ASKED QUESTIONS

I am trying to use my Beacon Tester but I get a ‘type mismatch’ error message.

Perform a Clean reset on your PDA (refer to PDA manufacturer’s instructions). This will take the PDA to the out-of-box state, so you will need to re-install the Beacon Tester software from the website www.wst.ca . Follow the download and installation instructions on the website.

I haven’t used my Beacon Tester for a while. Now, I can’t find the Beacon Tester icon.

The Beacon Tester software will need to be re-installed. Tap **Start > Programs > File Explorer > My Device > Built-in Storage > BTInstaller > BTInstaller.exe**. Follow the procedure in the section entitled *RE-INSTALLING BEACON TESTER SOFTWARE*. The procedure is very simple. If the BTInstaller folder is missing then go to the website www.wst.ca and download the latest Software.

Why is my PDA not responding?

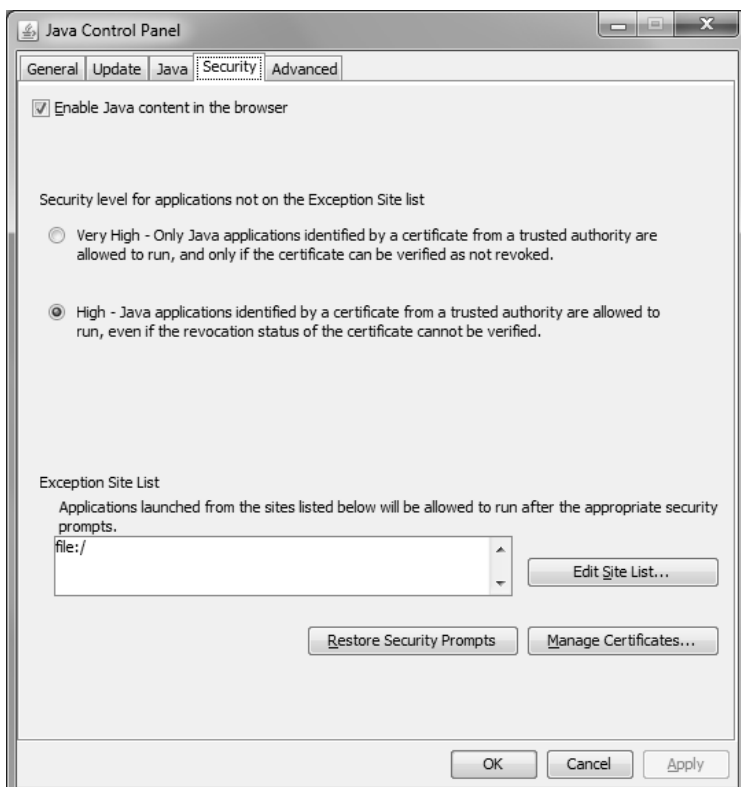
Occasionally the PDA will go into a mode where it will not respond to any input. Doing a soft reset by pressing the RESET button on the PDA usually fixes this problem. Refer to the PDA manual.

Why does nothing happen when I launch the Beacon Tester program?

Occasionally the Beacon Tester application does not terminate properly. Try tapping **Start > Settings > System > Memory > Running Programs > Stop All**. Then try to re-launch the program.

Why can’t I see the graphics on my Test Report?

Ensure the latest versions of Java are installed on your PC. In order to view the graphics on test reports generated using the Beacon Tester software previous to revision 3.6, you will need to add **file:/** to the Exception Site list found in the Java control panel. Make sure you don’t have your web browser open when you are doing this. The Java set-up should look similar to the following picture: (NOTE: click on the **Edit Site List...** button to add to the list):



My Beacon Tester won't receive either 406 MHz or 121.5 MHz.

Ensure that the proper Input mode is selected. If you are receiving a beacon self test transmission through its antenna, then select **Internal Antenna**. If you are testing a beacon in a screen box and connecting via the coax cable, then select **External Coax**. If you are connected directly to the ELT then select **5 Watt**.

My GPS coordinates are being displayed in degrees/decimal minutes (dd° mm.mm'). I prefer degrees/minutes/seconds (dd° mm' ss"). How do I change this?

Tap **Options > Printing/Configuration Options**. Select the desired format under the GPS Coordinates heading.

The internal temperature sensor appears to be reading high. Is there a problem?

Due to normal internal heating of the components, it is perfectly normal for the temperature sensor to indicate a reading that is a few degrees higher than the ambient temperature.

How many measurements will the PDA store?

The PDA can hold over 1000 measurements. It is strongly advised to transfer your measurements to a PC for long term storage.

How do I change a file name?

Select **Options > Files**. Select the file that you wish to change. Tap **Rename**. From the pop-up keyboard enter the desired new file name and tap **OK**.

How do I update the Beacon Tester software?

Go to the WS Technologies Inc. website at www.wst.ca and follow the instructions on updating the application software.

When I updated the Beacon Tester software I now have two Beacon Tester icons on the Program screen. How do I remove the second icon?

The second Beacon Tester icon can be easily removed by tapping **Start > Programs > File Explorer > My Device > Windows > Start Menu > Programs**. Tap and Hold on one of the Beacon Tester icons. When the pop-up menu appears, select delete.

When I activate the beacon in self test mode, the measurements produce questionable results. Is there a problem with the beacon?

In order to meet all of the Cospas-Sarsat requirements, a beacon is allowed a 15 minute warm-up period. When testing a beacon in self test, there is no warm-up period, hence some measurements may be somewhat skewed.

Also, in self-test, the 121.5 homing transmission may be different depending on the particular beacon. Some beacons transmit a short modulated signal, some beacons transmit a shorter unmodulated signal and some beacons transmit no signal. The Beacon Tester may indicate "unable to measure details" or "unmodulated carrier" depending on the beacon characteristics.

I am testing an ELT with separate 121.5 and 406 output connectors. What do I do to get the results printed on one Test Report?

Connect to the 121.5 transmitter first, then start the test. Once the Beacon Tester gives the indication that the 121.5 signal has been received, switch the cable to the 406 transmitter without stopping the test. Once the 406 burst is received on the Beacon Tester, the measurement will be complete.

I have a BT100AVS model. How do I import the stability measurement delimited text file into Microsoft Excel?

From Excel, click **File > Open**. From the pop-up window under **Files of Type** select **Text Files (*.prn, *.txt, *.csv)**. Go to the directory where your measurement file is saved. Click on the desired text file and click **Open**. The Text Import wizard will be displayed. Under the **Original data type** section select **delimited**. Click Next. In the next window under the **Delimiters** section select **Comma or Semicolon** (depending on which delimiter you have selected on the Beacon Tester). Click **Finish**.

To size the columns, select all columns then **Format > Column > AutoFit Selection**.

The data is now available to easily graph or analyze the data as desired.

Is the characteristic swept tone audio that I hear when the Beacon Tester receives a 121.5 MHz signal the actual demodulated audio from the beacon?

No, the swept tone audio is just an audio file played when the tester has received a 121 MHz signal. On the BT100AVtriple and BT100AVS models the actual 121/243 demodulated audio can be heard using the **Listen to 121/243 Audio** buttons in the **Options** menu.

The beacon I want to measure has training frequencies on 121.5 and 243 MHz. How do I setup the Beacon Tester to receive these training frequencies?

On Beacon Testers serial number 6000 and above, go to **Options > Printing/Configuration Options**. In the **Receive Mode Settings** section select **Receive Training Frequencies**. NOTE: The accuracy of the frequency measurement is slightly degraded when the Receive Training Frequencies mode is selected.

SPECIFICATIONS

		Beacon Testers BT100 series		ELT Testers BT100AV series		
PARAMETER		BT100A	BT100S	BT100AV triple	BT100AVS	ACCURACY
406 MHz MEASUREMENTS						
Measure all Cospas-Sarsat Frequency Channels		•	•	•	•	
Decode all Cospas-Sarsat Protocols		•	•	•	•	
UIN & Full HEX		•	•	•	•	
Frequency (using INT REF) (resolution = 100 Hz)						
	Leaving Factory	•	•	•	•	± 100 Hz
	Long Term					± 0.4 ppm/year
Frequency (using EXT REF) (resolution = 1 Hz)		•	•	•	•	± 1 Hz
Frequency* Stability	Nominal Frequency		•		•	± 2.5 x 10 ⁻¹¹
	Short Term		•		•	
	Medium Term - Mean Slope		•		•	
	Medium Term - Residual		•		•	
Power		•	•	•	•	± 1 dB
Power Rise Time		•	•	•	•	± 0.5 ms
Phase Modulation		•	•	•	•	± 0.04 rad
Modulation Rise and Fall Times		•	•	•	•	± 10 µs
Modulation Symmetry		•	•	•	•	± 0.005
Modulation Bit Rate		•	•	•	•	± 0.2 bps
CW Preamble			•	•	•	± 0.8 ms
121.5 MHz/243 MHz MEASUREMENTS						
121.5 MHz Frequency (using INT REF) (resolution = 100 Hz)						
	Leaving Factory	•	•	•	•	± 100 Hz
	Long Term					± 0.4 ppm/year
243 MHz Frequency (using INT REF) (resolution = 100 Hz)						
	Leaving Factory			•	•	± 200 Hz
	Long Term					± 0.4 ppm/year
121.5 MHz Frequency (using EXT REF) (resolution = 1 Hz)		•	•	•	•	± 30 Hz
243 MHz Frequency (using EXT REF) (resolution = 1 Hz)				•	•	± 30 Hz
121.5 MHz Peak Power		•	•	•	•	± 1.5 dB
243 MHz Peak Power				•	•	± 1.5 dB
Sweep Direction		•	•	•	•	✓
Audio Frequency		•	•	•	•	± 30 Hz
Sweep Range		•	•	•	•	± 60 Hz
Duty Cycle		•	•	•	•	± 2%
Modulation Factor		•	•	•	•	± 5%
Sweep Repetition Rate		•	•	•	•	± 0.1 Hz
Listen to Real-Time 121.5 Audio				•	•	✓
Listen to Real-Time 243 Audio				•	•	✓
Decipher Morse Code				•	•	✓
* User must supply a stable 10 MHz Reference Signal						

Miscellaneous			
Range (using Internal Antenna): 406 MHz 121.5 MHz		>10 m >3 m	
RF Input VSWR		1.10:1	
RF Input Level:	406 MHz Burst 121.5 MHz	-13 dBm Min -28 dBm Min	+40 dBm Max +31 dBm Max
10 MHz REF Input VSWR		1.15:1	
10 MHz REF Input Level		-10 dBm Min	+10 dBm Max
Operating Temperature Range		0°C to +50°C	
Storage Temperature Range		-20°C to +60°C	
Internal Temperature Sensor Accuracy		± 0.5°C	
RF Input Cable Termination		BNC-female	
10 MHz REF Cable Termination		SMA-female	
Dimensions:	BT100 w x l x h mm (inches)	43.5 (1.71) x 58.5 (2.30) x 12.7 (0.50)	
	BT100 in PDA w x l x h mm (inches)	73 (2.87) x 140 (5.50) x 16.5 (0.65)	
	Hard Case w x l x h mm (inches)	324 (12.75) x 273 (10.75) x 114 (4.50)	

REGULATORY INFORMATION

CANADA

This Class B digital apparatus complies with Canadian ICES-003.

USA

Note: This equipment has been tested and found to comply with the limits for a Class B digital device, pursuant to part 15 of the FCC Rules. These limits are designed to provide reasonable protection against harmful interference in a residential installation. This equipment generates, uses and can radiate radio frequency energy and, if not installed and used in accordance with the instructions, may cause harmful interference to radio communications. However, there is no guarantee that interference will not occur in a particular installation. If this equipment does cause harmful interference to radio or television reception, which can be determined by turning the equipment off and on, the user is encouraged to try to correct the interference by one or more of the following measures:

- Reorient or relocate the receiving antenna.
- Increase the separation between the equipment and receiver.
- Connect the equipment into an outlet on a circuit different from that to which the receiver is connected.
- Consult the dealer or an experienced radio/TV technician for help.

This equipment complies with Part 15 of the FCC Rules. Operation is subject to the following two conditions:

1. This equipment may not cause harmful interference.
2. This equipment must accept any interference that may cause undesired operation.

EUROPEAN UNION

DECLARATION OF CONFORMITY

Supplier Name: WS Technologies Inc.

Supplier Address: #2 – 215 Neave Road
Kelowna, B.C.
Canada V1V 2L9

Declares under our sole responsibility that the following product

Product Name: 406 Beacon Tester
Model BT100

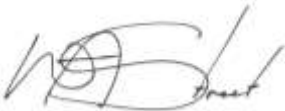
Conforms to the following normative European and International Standards

Normative Standards: EN 300 220-1 V1.3.1 (2000-09)
EN 301 489-3 V1.4.1 (2002-04)
EN 61000-4-2 :1995
EN 61000-4-3 :1996

Following the provisions of the normative European Council 1999/5/EC R&TTE Directive.

Product conformance to cited product specifications is based on sample (type) testing, evaluation, or assessment at Nemko Canada, Inc. located in Ottawa, Canada. Accepted by EU or FCC Notified and Competent Bodies.

Supplementary Information: This product was tested and complies with all the requirements for the CE Mark.



W.A. Street
President
WS Technologies Inc.
#2 – 215 Neave Road
Kelowna, BC
Canada V1Y 5L9
Phone: (250) 765-7583
FAX: (250) 765-1652

WARRANTY INFORMATION

WS Technologies Inc. (WST) warrants the products manufactured by WST to be free from defects in material and workmanship for one year from the date of shipment. This warranty is NOT inclusive of the PDA nor its accessories. All PDA and PDA accessories are covered under the PDA manufacturer's warranty. The purchaser is required to contact the PDA manufacturer for these warranty issues. Liability of WST under the foregoing warranty is limited to the replacement or repair, at the option of WST, of any products which show defective workmanship or materials within one year from the date of shipment, which replacement shall be made FOB WST's facility in Kelowna, BC, CANADA, upon proof satisfactory to WST of the defect claimed. Except for the foregoing warranty, WST makes no other warranty, express or implied, as to the merchantability or fitness for a particular purpose of products shipped or the performance thereof, and does not make any warranty to the purchaser's customers or agents.

CALIBRATION

The BT100 series of Beacon Testers has been designed to have a standard two year calibration cycle. The calibration date appears on the Calibration Certificate supplied with the Beacon Tester and the Cal Due date appears on the back of the Beacon Tester CF Card.

Before returning a unit for calibration, email returns@wst.ca to obtain an RMA (Return Materials Authorization) number and shipping instructions. For all models except the Ruggedized (-R) models, return only the BT100 CF Card – do not return the PDA. Once calibrated a new Cal Due date label will be placed on the back of the CF Card and a new Calibration Certificate will be issued. For Ruggedized models return the complete unit.

RETURNS

An RMA (Return Materials Authorization) number must be obtained by emailing returns@wst.ca . If the unit being returned is not covered under warranty, a minimum repair charge will apply. If damage is severe or the products have been tampered with, there may be additional charges.

POWER CONVERSION CHART - dBm to Watts

dBm	Watts	dBm	Watts	dBm	Watts
-12	0.06 mW	8	6 mW	28	630 mW
-11	0.08 mW	9	8 mW	29	800 mW
-10	0.10 mW	10	10 mW	30	1.0 W
-9	0.13 mW	11	13 mW	31	1.3 W
-8	0.16 mW	12	16 mW	32	1.6 W
-7	0.20 mW	13	20 mW	33	2.0 W
-6	0.25 mW	14	25 mW	34	2.5 W
-5	0.32 mW	15	32 mW	35	3.2 W
-4	0.40 mW	16	40 mW	36	4.0 W
-3	0.50 mW	17	50 mW	37	5.0 W
-2	0.63 mW	18	63 mW	38	6.3 W
-1	0.8 mW	19	79 mW	39	8.0 W
0	1.0 mW	20	100 mW	40	10 W
1	1.3 mW	21	126 mW	41	13 W
2	1.6 mW	22	158 mW	42	16 W
3	2.0 mW	23	200 mW	43	20 W
4	2.5 mW	24	250 mW	44	25 W
5	3.2 mW	25	316 mW	45	32 W
6	4 mW	26	398 mW	46	40 W
7	5 mW	27	500 mW	47	50 W

Notes:

Notes: